

Press Release



New Energy and Industrial Technology
Development Organization

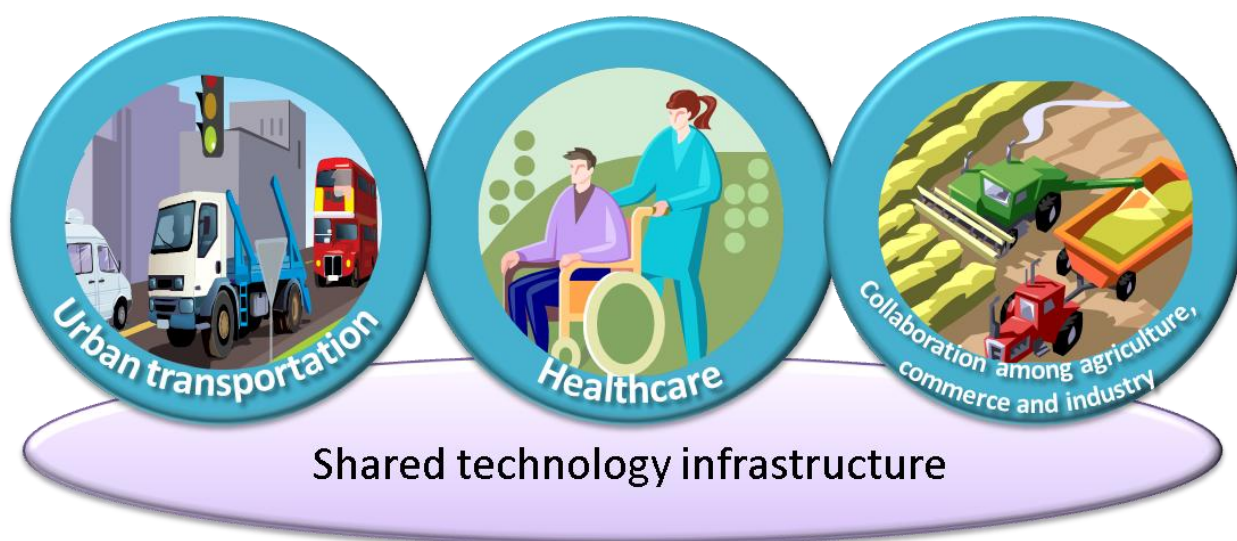
<http://www.nedo.go.jp/english/index.html>

October 25, 2012

Launch of IT Integration-based New Social System Development and Demonstration Projects — Creation of New Industries by Utilizing IT Data —

Based on the results of a public solicitation for its IT integration-based new social system development and demonstration projects, the New Energy and Industrial Technology Development Organization (NEDO) has selected 18 project themes in the fields of urban transportation, healthcare, collaboration among agriculture, commerce and industry, as well as data processing infrastructures, which will serve as base technologies to support the other three fields (see Annex).

NEDO aims to create new industries through IT integration and development activities in the above-mentioned four fields, including practical applications for technologies using brain imaging and clinical information to expedite early diagnosis of Alzheimer's disease and the development of preventive medicine based on precision diagnostic data.



IT Integration Project

1. Project Overview

A wide variety and mass volumes of data are being exchanged these days. Learning how to understand the value of such data and utilize it is key to improving competitiveness in business activities. Against this backdrop, this project is designed to establish a business model that aims to develop next-generation sustainable societies by using IT data to integrate advanced element technologies in the fields of urban transportation, healthcare, and collaboration among agriculture, commerce and industry. Leading research activities for data processing infrastructures, which will support the above-mentioned fields, will also be carried out in this project. More specifically, availability of element technologies in the above-mentioned fields will be assessed by the end of FY2013 in order to select project themes that have potential for practical use with the aim of launching full-scale demonstration projects from FY2014.

Examples of project activities:

Urban transportation

- Demonstration of new personal mobility sharing business that utilizes a variety of data sources, including personal attributes, location and time

Healthcare

- Development of technologies using advanced IT, brain imaging and clinical information, which will expedite early diagnosis of Alzheimer's disease and develop preventive medicine based on precision diagnostic data

Collaboration among agriculture, commerce and industry

- Development of services to support the production and delivery of high quality, market competitive agricultural products by using large volumes of data obtained through ongoing quality monitoring

Data processing infrastructure

- Development of real-time data processing systems with advanced data analysis functions and data storage that enables the systems to have high-speed access to necessary data

Project period: FY2012–FY2016

Project budget: approximately 9.8 billion yen (NEDO portion: 50% or more)

2. Contact Persons

Mr. Yoshiki, Mr. Mase, Office for the Promotion of IT Integration, NEDO

Tel: +81-44-520-5210

Project Themes Selected for IT Integration-based New Social System Development and Demonstration Projects

Urban transportation

1. Development and Demonstration of Value-added Information Services Utilizing Mobile Data Banks
(Nishitetsu Information System Co.,Ltd., MEITETSUCOM Co.,Ltd., Internet ITS Corporation, Kyushu University, Nagoya University)
2. Development and Demonstration of Tour Package Car Rental Services in Hokkaido Utilizing Imaging, Including Vehicle-mounted Cameras
(DENSO Corporation, DENSO Sales Japan Corporation, Japan Airlines Co., Ltd., Hokkaido University, Saitama University)
3. Development and Demonstration of Community-based Support Services and Care that Combines Support for Individuals Needing Assistance and Home Delivery Services
(GreenSync,Inc., EX Research Institute Ltd. Environmental and Regional Planning, Research and Consulting., Waseda Environmental Institute Co., Ltd., Good Morning Lala, Japan Institute of Logistics Systems., Waseda University Environmental Research Institute)
4. Development and Demonstration of Smart Personal Mobility Sharing Services that Integrate Personal Information
(TOYOTA MOTOR CORPORATION, National Institute of Advanced Industrial Science and Technology)
5. Development and Demonstration of Integrated Traffic Information Services Provided by the Energy Management Center of Regional Transportation
(i-Transport Lab.Co.,Ltd., Mitsubishi Heavy Industries, Ltd., Japan Automobile Research Institute, Institute of Industrial Science, The University of Tokyo)
6. Development and Demonstration of Life Support Services that Facilitate Movement around Stations by Utilizing Urban Spatial Information
(KDDI R&D Laboratories, National Institute of Informatics, The University of Tokyo)

Healthcare

1. Research on the Development of Diagnostic Measures and Preventive Medicine for Early Stage Alzheimer's Disease Through a Combination of Brain Imaging, Clinical Research and Information Technology
(Research Association for Biotechnology., National Center of Neurology and Psychiatry, National Center of Geriatrics and Gerontology, The University of Tokyo, Niigata University)
2. Development of Integrated Decision Support System for Cancer Treatment: Innovation of Pathological Diagnosis and Treatment Planning Process with Information Technologies
(Hitachi, Ltd., J-MAC SYSTEM, INC., Canon Inc., MITSUBISHI HEAVY INDUSTRIES, LTD., National Cancer Center Hospital East, Hokkaido University, Keio University, Kyoto University.)
3. Development of Integrated Decision Support Platforms for Stroke Imaging Using Next-generation Medical Cloud Computing Systems
(NTT DATA CORPORATION, NTT DATA INSTITUTE OF MANAGEMENT CONSULTING, Inc., Iwate Medical University)
4. Research to Improve Patient QOL Through the Integration of IT, and Medical and Healthcare for Tertiary Prevention
(KUMAMOTO Wellness Support Institute, Inc., Y's Reading inc., Triart inc., Densan, Inc, Good One Co., Ltd, Kumamoto University)
5. Development of IT-assisted Diagnosis and Medical Treatment Systems for Dissemination of Corneal Regenerative Medicine
(NIDEK CO., LTD., Japan Tissue Engineering Co., Ltd., Osaka University)
6. Development of Virtual Clinic in Developing Countries by IT Covergence
(CARNA HEALTH SUPPORT, Kyushu University)

Collaboration among agriculture, commerce and industry

1. Development of a Smart Streamlined Agriculture Architecture and Dissemination of an Agricultural Production Support Service Business Based on the Architecture
(NEC System Technologies, Ltd., NEC Corporation, OMI WEIGHING MACHINE INC., Institute of Japan Agriculture Support, Seed Time, RIKEN, Japan., Tokyo University of Agriculture and Technology)
2. Development of a Platform that Combines IT with SCM to Achieve Strategic Production and Sales in the Japan Quality Systems Agriculture Field
(DESIGNER FOODS, NEC Corporation, Toyohashi University of Technology)
3. Development of a Private Cloud Market Platform Based on Harvest Forecast Information to Achieve Collaborative Food and Agriculture Businesses
(FUJITSU LIMITED, Fujitsu Systems East Limited, CALBEE POTATO INC., Memuro Agricultural Cooperative)
4. Development of an Innovative Vegetable Production and Distribution Information System Based on Nutrition
(ASD Inc., Sojo University)

Data processing infrastructure

1. Development of Scalable Real-time Processing Platforms for Large-scale Data Analysis
(NEC Corporation, Preferred Infrastructure, Inc., National Institute of Advanced Industrial Science and Technology)
2. Development of Highly-reliable and Energy-efficient Architecture for Realizing Scalable M2M Data Platforms
(Hitachi, Ltd., The University of Tokyo)